

RESOLUTION NO. 2005-213

**A RESOLUTION OF THE CITY COUNCIL OF THE CITY OF ELK GROVE
APPROVING THE ABANDONMENT OF A PORTION OF BOND ROAD AND
WATERMAN ROAD FOR THE BOND ROAD WIDENING PROJECT**

WHEREAS, the City is currently in the process of widening Bond Road; and

WHEREAS, staff has determined right-of-way requirements for this project; and

WHEREAS, as part of this abandonment a fee strip is being dedicated to the City for road purposes along with a Public Utility and Temporary Construction Easement and that said documents are attached hereto and are to be recorded concurrently with this resolution; and

WHEREAS, staff has determined that the abandonment is consistent with the Streets and Highways Code Section (Section 8320 et. seq.); and

WHEREAS, the City of Elk Grove Planning Department has reviewed this project and has determined that environmental clearance was previously approved by City Council with the Bond Road Widening Project Mitigated Negative Declaration (SCH #2004022063); and

WHEREAS, the City of Elk Grove Planning Department has determined that the vacation is consistent with the General Plan.

NOW, THEREFORE BE IT RESOLVED that the City Council of the City of Elk Grove hereby finds as follows:

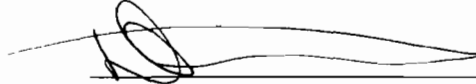
- a. That said vacation would be consistent with and not violate the General Plan and all elements and components thereof for the City of Elk Grove; and
- b. That the right-of-way is not necessary for the widening of Bond Road and Waterman Road; and
- c. That the public interest will be served by the herein vacation.

NOW, BE IT FURTHER RESOLVED AND ORDERED that said right-of-way over those portions of land as shown on Exhibit "A" and described in Exhibit "B" is hereby vacated.

BE IT FINALLY RESOLVED AND ORDERED that the City Clerk of the City of Elk Grove shall cause a certified copy of this Resolution of Vacation, attested by the Clerk under seal, to be recorded in the office of the Recorder of the County of

Sacramento.

PASSED AND ADOPTED by the City Council of the City of Elk Grove on this 13th day of July 2005.



DANIEL BRIGGS, MAYOR of the
CITY OF ELK GROVE

ATTEST:



PEGGY E. JACKSON, CITY CLERK

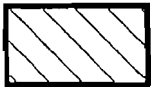
APPROVED AS TO FORM:



ANTHONY B. MANZANETTI,
CITY ATTORNEY

LEGEND

EXHIBIT "A"



Area to be Vacated

SANTA FE BOBIER
LAND ASSOCIATES, LLC
20040517 OR 2454
APN 127-0010-053 & 011

CITY OF
ELK GROVE
109 OR 374

Westerly Line
Waterman Road

Northerly Line
Bond Road

Point of
Beginning

Point of
Commencement

WATERMAN
ROAD

BOND RO.

APN 127-0160-046

AREA
12,403 Sq. Ft. 0.285 Acres

The bearings are based on the California
Coordinate System of 1983 (1997.30), Zone 2.

SCALE: 1" = 40'



CITY OF ELK GROVE
EXHIBIT "A"

SANTA FE BOBIER LAND
ASSOCIATES, LLC. PROPERTY

008 APN 127-0010-053 & 011

ELK GROVE SACRAMENTO COUNTY CALIFORNIA



WORLDWIDE INC.

CIVIL ENGINEERING • LAND SURVEYING
PLANNING

111 CENTER AVE. • SUITE F • PACHECO • CA • 94553
MAILING ADDRESS • P. O. BOX 6327 • CONCORD • CA • 94524
(925) 686-9890 • FAX (925) 686-9893

DESIGNED: STAFF
DRAWN: JPW
CHECKED: AXD
SCALE: 1"=40'
DATE: 05-04-05
SHEET NO. 1 OF 2
JOB NO. 203-096

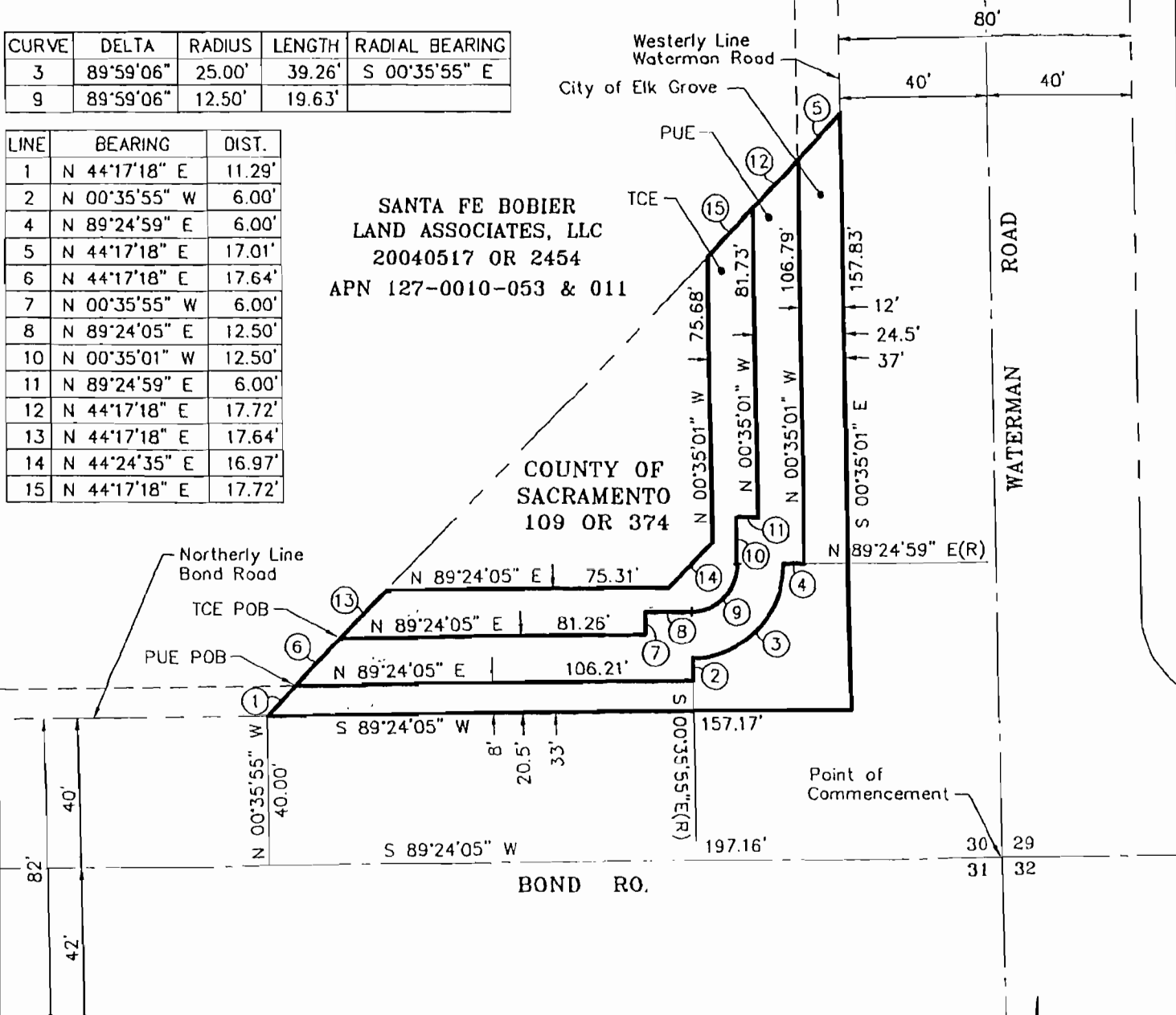
4754.05

CURVE	DELTA	RADIUS	LENGTH	RADIAL BEARING
3	89°59'06"	25.00'	39.26'	S 00°35'55" E
9	89°59'06"	12.50'	19.63'	

LINE	BEARING	DIST.
1	N 44°17'18" E	11.29'
2	N 00°35'55" W	6.00'
4	N 89°24'59" E	6.00'
5	N 44°17'18" E	17.01'
6	N 44°17'18" E	17.64'
7	N 00°35'55" W	6.00'
8	N 89°24'05" E	12.50'
10	N 00°35'01" W	12.50'
11	N 89°24'59" E	6.00'
12	N 44°17'18" E	17.72'
13	N 44°17'18" E	17.64'
14	N 44°24'35" E	16.97'
15	N 44°17'18" E	17.72'

SANTA FE BOBIER
LAND ASSOCIATES, LLC
20040517 OR 2454
APN 127-0010-053 & 011

COUNTY OF
SACRAMENTO
109 OR 374



APN 127-0160-046

- FS - Fee Simple
- TCE - Temporary Construction Easement
- PUE - Public Utility Easement
- POB - Point of Beginning
- POC - Point of Commencement

The bearings are based on the California
Coordinate System of 1983 (1997.30), Zone 2.

AREA	
FS	3,421 Sq. Ft. 0.079 Acres
PUE	3,025 Sq. Ft. 0.069 Acres
TCE	2,202 Sq. Ft. 0.051 Acres

SCALE: 1" = 40'

CITY OF ELK GROVE
EXHIBIT "B"

006 SANTA FE BOBIER LAND
ASSOCIATES, LLC. PROPERTY

APN 127-0010-053 & 011

ELK GROVE SACRAMENTO COUNTY CALIFORNIA



WORLDWIDE INC.
CIVIL ENGINEERING • LAND SURVEYING
PLANNING

111 CENTER AVE. • SUITE F • PACHECO • CA • 94553
MAILING ADDRESS • P. O. BOX 6327 • CONCORD • CA • 94524
(925) 686-9890 • FAX (925) 686-9893

DESIGNED:	STAFF
DRAWN:	JPW
CHECKED:	AXD
SCALE:	1"=40'
DATE:	10-13-04
SHEET NO.	1 OF 1
JOB NO.	203-096

12.11.04


**CERTIFICATION
ELK GROVE CITY COUNCIL RESOLUTION NO. 2005-213**

STATE OF CALIFORNIA)
COUNTY OF SACRAMENTO) **ss**
CITY OF ELK GROVE)

I, Peggy E. Jackson, City Clerk of the City of Elk Grove, California, do hereby certify that the foregoing resolution was duly introduced, approved, and adopted by the City Council of the City of Elk Grove at a regular meeting of said Council held on the 13th day of July, 2005 by the following vote:

- AYES 5: COUNCILMEMBERS: Scherman, Soares, Briggs, Leary, Briggs**
- NOES 0: COUNCILMEMBERS:**
- ABSTAIN 0: COUNCILMEMBERS:**
- ABSENT 0: COUNCILMEMBERS:**





**Peggy E. Jackson, City Clerk
City of Elk Grove, California**